



Infor Product Configurator

Key Benefits

Using the Product Configurator, you can:

Accelerate key processes such as quoting, order entry, and price book/catalog generation.

Increase sales by making every sales person, customer service rep, dealer, and distributor a product expert.

Decrease costs by reducing the need for engineering support in sales and other processes.

Eliminate errors in product specification and pricing.

Enable growth with the ability to quickly train new employees and sales partners.

Speed new product introduction by reducing or eliminating the need to distribute product and pricing updates.

Streamline production and improve quality by providing accurate configuration-specific information to manufacturing.

Differentiate from the competition by becoming "easy to do business with" when dealing with your customized products.

The Infor Product Configurator is a new generation product and sales configurator that is easily integrated with *any or all* of your web, mobile, enterprise, desktop, or laptop systems. Powerful and intuitive, the Product Configurator has the flexibility to handle any customizable product or service, and support practically any type of user or application.

The Product Configurator enables you to:

Capture the knowledge of your product experts in easily maintained product models.

Publish product models from the central repository to the people and applications.

Guide users through selection of the product, features, options, and dimensions.

Calculate price, cost, and other information such as performance characteristics or engineering specifications based on the product configuration.

Generate a wide range of configuration-specific outputs, including images, models, and documents.

Intuitive User Interface

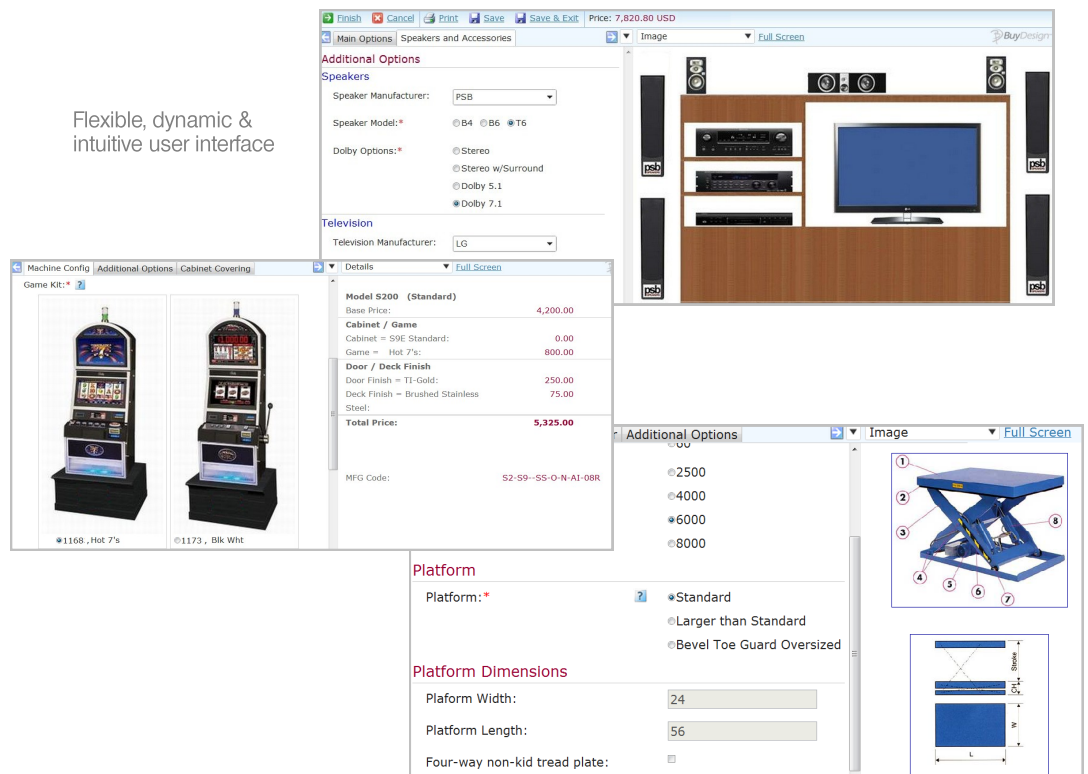
A dynamic user interface makes the entire configuration experience highly intuitive, productive, and personalized on just about any PC or mobile device. Key features include:

Dynamically-rendered user experience presents the right product view, language, currency, pricing, and UI features based on the combination of: user role, mobile or PC device type, location, and task.

Customizable look and feel makes option selection extremely easy without programming.

APIs for custom extensions make it easy to give users a rich experience and leverage existing data and programs.

Flexible, dynamic & intuitive user interface



The Product

The Infor Product Configuration Management solution enables manufacturers to streamline the selling and production of their configured products. Our solution helps customers create compelling quotes, accurate orders, and complete bills of materials and routings; driving revenues, reducing costs and differentiating their brands in the marketplace.

Powerful Configuration Engine

The core configuration engine processes the rules, constraints and associated data in product models based on inputs from the user interface or other applications to provide the following functions:

Guided product selection helps users identify and select the product that best fit their needs.

Product configuration helps users understand and select available features, options, and dimensions while ensuring they define a valid product.

Product pricing ensures an accurate price and/or cost for any given configuration.

Real-time product visualization brings your products to life by providing immediate visual reference and confirmation at the product, feature, and option levels. Visualization options include static imagery, 2D drawings, 3D CAD models, and rendered images.

Output Generation dramatically reduces the effort to create documents and data required to sell or manufacture the configured product. Output options include configuration-specific BOMs, routings, drawings, CAD models, and just about any kind of document.

Graphical Design Studio

The product models that drive the Product Configurator are developed in the Design Studio. You can easily create comprehensive product models that make selection and configuration of even the most complex products intuitive and error-free.

Integrated product & user experience modeling in a single environment enables you to control exactly what configurator users will be able to see and do based on their role, business function, and application context.

Robust modeling tools leverage a combination of rules and constraints to represent product knowledge and tailor the user experience by role, function, application and locale.

Graphical user interface provides a visual representation of the model with point-and-click access to the details of every rule and constraint.

Real-time testing environment enables you to iteratively develop and test models.

Model management tools enable you to maintain control of product models in development, staging and production.

Deploy Anywhere, Manage Centrally

Besides its flexibility and ease of use, the Product Configurator has uniquely powerful integration and administration capabilities. Using these tools, you can easily deploy the Product Configurator for a specific function, or across *all* your applications and computing platforms. You can decide to make it available to particular individuals or to your global community of employees, partners and customers. With the Product Configurator, you can:

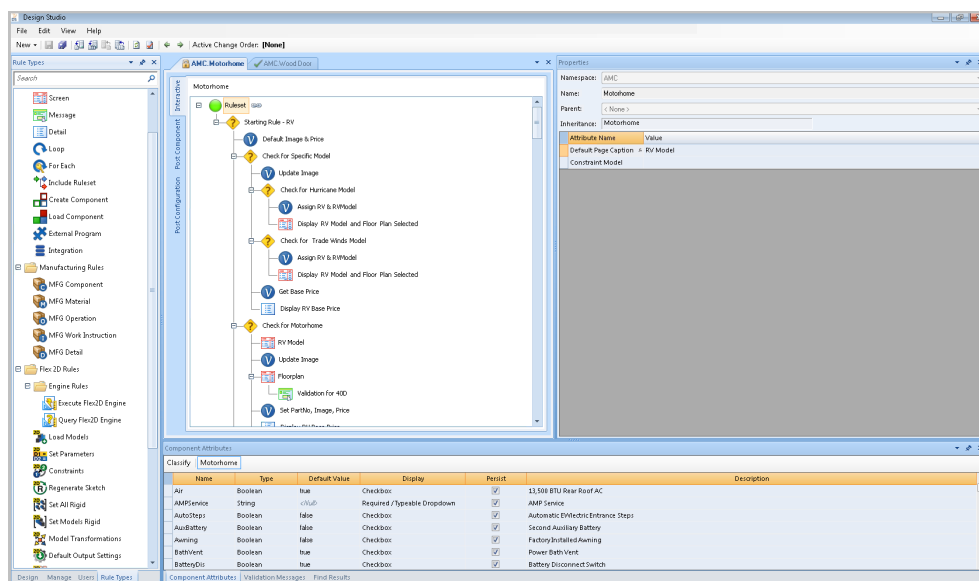
Integrate with web, client-server, or native applications on Windows, iSeries, or UNIX platforms using native APIs or Web services.

Deploy online via the Web, enable mobility on iPad and other tablets and smart phones, and distribute to remote PCs with automated Internet-based synchronization.

Offer role-based configuration capabilities to your sales force, customer service personnel, dealers, distributors, and end customers from a single, consistent product model.

Manage all information, including product and pricing data, images, CAD models, configuration rules, and user profiles from a central point.

Scale up to any number of applications and users with multi-server, load balancing, and failover capabilities.



Graphical product modeling